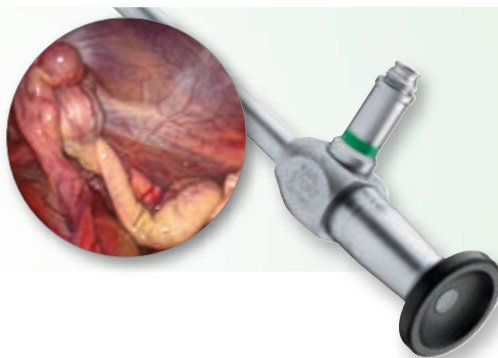


Laparoscopy and Thoracoscopy in Equine Practice



Laparoscopy and Thoracoscopy in Equine Practice

Minimally invasive procedures offer several advantages over traditional abdominal and thoracic surgery in the horse: Reduced morbidity, reduced hospitalization, reduced incidence of infections, faster recovery, improved visualization and/or surgical access, and improvement/development of procedures that could not be achieved with open surgery. Indications for laparoscopy in the horse include visual examination, organ biopsy,

acute or chronic cholic, cryptorchidectomy, castration, inguinal hernia, ovariectomy, neoplasia, cystic calculi, nephrectomy, ablation of nephrosplenic space, and embryo transfer. Equine thoracoscopy is most commonly indicated in horses with pleuropneumonia or intra-thoracic masses.





Fig. 1:
Inguinal hernia

Fig. 2:
Cryptorchidectomy

Fig. 3:
Cryptorchidectomy

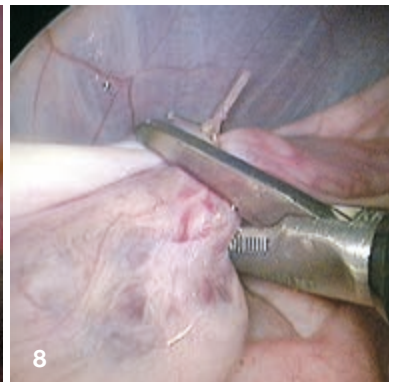
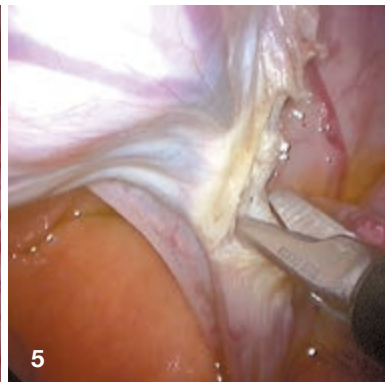
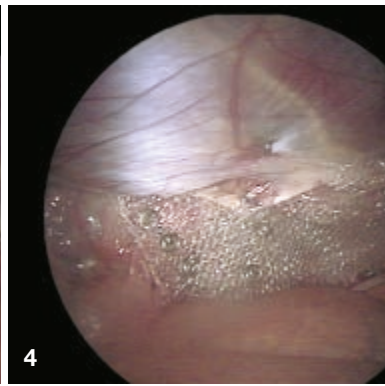
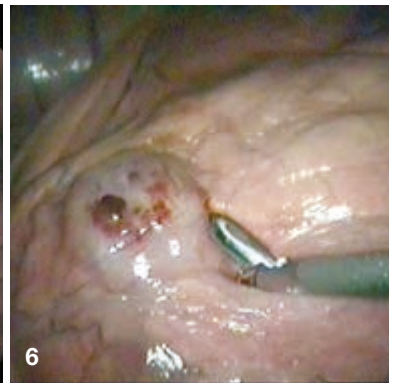
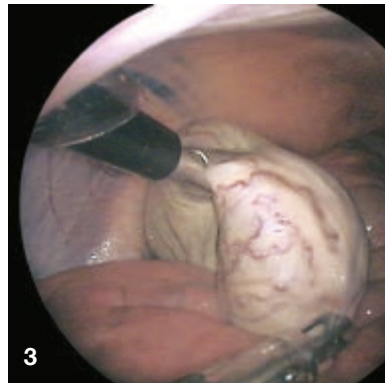
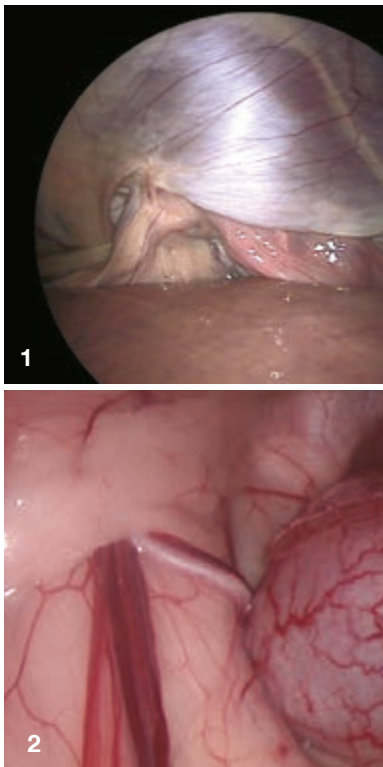
Fig. 4:
Hernia repair

Fig. 5:
Ovarian pedicle transection

Fig. 6:
Biopsy of lung mass

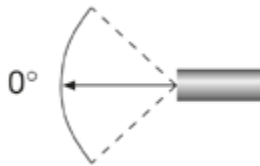
Fig. 7:
Retained testicle

Fig. 8:
Transection of mesorchium and vas deferens



Endoscopic photograph on cover courtesy of Dr. Claude A. Ragle, Washington State University, USA. Endoscopic photographs 2, 5, 6 and 8: Reprinted from Equine Diagnostic and Surgical Laparoscopy, A. T. Fischer, Jr., © 2002, with permission from Elsevier. All other photographs courtesy of Dr. Josef Boening, Tierklinik, Münster-Telgte, Germany

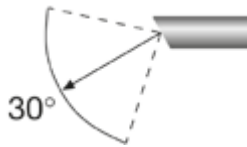
Laparoscopes



0°

26003AA

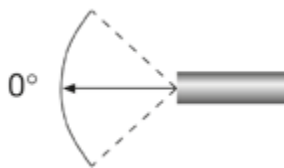
HOPKINS® Straight Forward Telescope 0°, diameter 10 mm, length 31 cm, **autoclavable**, fiber optic light transmission incorporated, color code: green



30°

26003BA

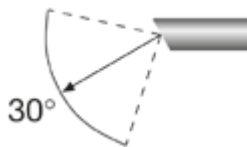
HOPKINS® Forward-Oblique Telescope 30°, enlarged view, diameter 10 mm, length 31 cm, **autoclavable**, fiber optic light transmission incorporated, color code: red



0°

62032APA

HOPKINS® Straight Forward Telescope 0°, enlarged view, diameter 10 mm, length 57 cm, **autoclavable**, fiber optic light transmission incorporated, color code: green



30°

62032BPA

HOPKINS® Forward-Oblique Telescope 30°, enlarged view, diameter 10 mm, length 57 cm, **autoclavable**, fiber optic light transmission incorporated, color code: red

Trocars

Size 11 mm



62103MPL **Trocar**, size 11 mm
including:
Trocar only, with pyramidal tip
Cannula, working length 20 cm
Multifunctional Valve

62103MP **Same**, working length 10.5 cm



60103TXR TERNAMIAN **ENDOTIP Cannula**,
with thread and rotatable insufflation stopcock,
size 11 mm, working length 20 cm,
color code: green
including:
Multifunctional Valve
Seal Set, 60/10
Mandrel, for opening automatic valves

Size 6 mm



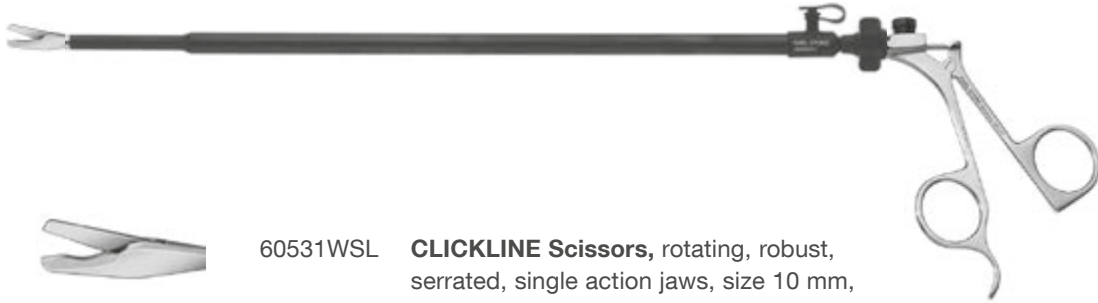
62160MPL **Trocar**, size 6 mm
including:
Trocar only, with pyramidal tip
Cannula, length 20 cm
Multifunctional Valve

Reducer



62141DB **Reducer**, 11 mm/5 mm

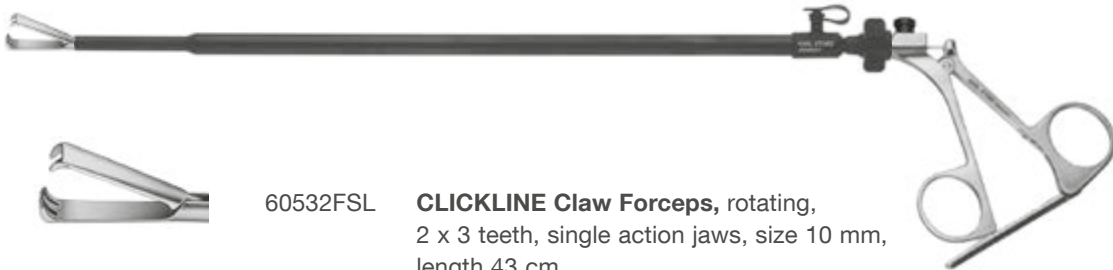
**Operating Instruments, size 10 mm
for use with trocars size 11 mm**



60531WSL **CLICKLINE Scissors**, rotating, robust, serrated, single action jaws, size 10 mm, length 43 cm
including:
Metal Handle, without ratchet
Outer Sheath, insulated
Scissors Insert



60531SGL **CLICKLINE BABCOCK Grasping Forceps**, atraumatic, for large organs, double action jaws, jaw length 70 mm, size 10 mm, length 43 cm
including:
Metal Handle, without ratchet
Outer Sheath, insulated
Forceps Insert

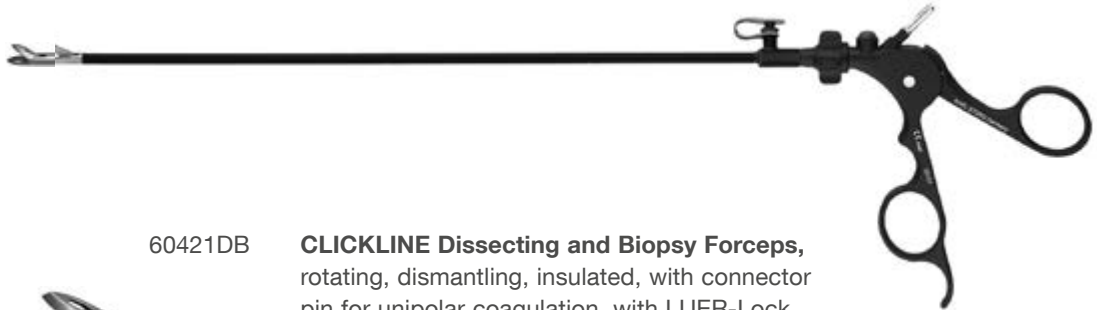


60532FSL **CLICKLINE Claw Forceps**, rotating, 2 x 3 teeth, single action jaws, size 10 mm, length 43 cm
including:
Metal Handle, with style ratchet
Outer Sheath, insulated
Forceps Insert



60532BCL **CLICKLINE BABCOCK Grasping Forceps**, atraumatic, double action jaws, size 10 mm, length 43 cm
including:
Metal Handle, with style ratchet
Outer Sheath, insulated
Forceps Insert

**Operating Instruments, size 5 mm,
for use with trocars size 6 mm or 11 mm with reducer**



60421DB



CLICKLINE Dissecting and Biopsy Forceps, rotating, dismantling, insulated, with connector pin for unipolar coagulation, with LUER-Lock irrigation connector for cleaning, single action jaws, size 5 mm, length 43 cm including:
Plastic Handle, without ratchet
Metal Outer Sheath, insulated
Forceps Insert



62178T

Palpation Probe, with cm-marking, size 5 mm, length 43 cm



62178P

Injection Cannula, LUER-Lock, needle diameter 1.2 mm, size 5 mm, length 43 cm

Needle Holders



26178KPF **KOH Macro Needle Holder**, with tungsten carbide insert, ergonomic pistol handle with disengageable ratchet, ratchet position left, jaws straight, size 5 mm, length 43 cm



26178KPL **Same**, jaws curved to left



26178KPR **Same**, jaws curved to right

Knot Tier



26596SKL **Knot Tier**, for extracorporeal knotting, size 5 mm, length 46 cm

CO₂ ENDO-ARTHROFLATOR-VET



Special Features:

- One unit with laparoscopy and arthroscopy mode
- High operating safety
- Continuously adjustable insufflation pressure
- Easy to use
- Fully automatic, electronically controlled gas refill (in case of gas loss when changing instruments)

62432501 **CO₂ ENDO-ARTHROFLATOR-VET**,
power supply 100-240 VAC, 50/60 Hz
including:
Silicone Tubing Set, sterilizable
Universal Wrench
Gas Filter, sterile, for single use, package of 10

Optional Accessories

UI004 **Insufflation Tube**, sterilizable, inner diameter 9 mm, length 250 cm

031122-25 **Gas Filter**, sterile, for single use, package of 10

NOTE:

The pressure hose and CO₂ bottles must be ordered separately, see catalog:
Veterinary Endoscopy, Large Animals

IMAGE1 S™ HD Imaging System

The IMAGE1 S™ HX camera system is a cost-effective video imaging system which delivers brilliant, true color, FULL HD images (1920 x 1080p, 16:9 aspect ratio). Compatible with both rigid and flexible endoscopes, the IMAGE1 S™ modular platform adapts to individual customer needs and can be expanded as requirements change.



TH110

IMAGE1 S™ HX One-Chip FULL HD Camera Head, 50/60 Hz, fixed focus, progressive scan, soakable, gas- and plasma-sterilizable, focal length $f = 16$ mm, 2 freely programmable camera head buttons, for use with IMAGE1 S™



TC201EN*

IMAGE1 S CONNECT® II, connect module, for use with up to 3 link modules, resolution 3840 x 2160 and 1920 x 1080 pixels, with integrated KARL STORZ-SCB and digital Imaging Processor Module, power supply 100-240 VAC, 50/60 Hz, including:

Mains Cord, length 300 cm

DVI-D Connecting Cable, length 300 cm

DisplayPort Cable, 300 cm

SDI Cable, 300 cm

SCB Connecting Cable, length 100 cm

USB Flash Drive, 32 GB

USB Silicone Keyboard, with touchpad, US



TC301

IMAGE1 S™ X-LINK, link module, for use with flexible video endoscopes and one-chip camera heads (up to FULL HD), power supply 100-120 VAC/200-240 VAC, 50/60 Hz, for use with IMAGE1 S CONNECT® TC200EN including:

Mains Cord, length 300 cm

Link Cable, length 20 cm

* Also available in the following languages: DE, ES, FR, IT, PT, RU

Light Source



Special Features:

- Light intensity on the same level as 300 Watt Xenon light sources
- 30,000 h no lamp exchange necessary
- Constant light output over the complete duration of life

TL300

Cold Light Fountain Power LED 300,
with integrated KARL STORZ-SCB,
high-performance LED module and
one KARL STORZ light outlet



69495NCS

Fiber Optic Light Cable,
diameter 4.8 mm, length 250 cm

Check out our schedule of upcoming hands-on training courses at:
<http://go.karlstorz.com/eventsVET>



More than
75
Years

*Shaping the Future
of Endoscopy with you*

STORZ
KARL STORZ—ENDOSKOPE

THE DIAMOND STANDARD

KARL STORZ SE & Co. KG
Dr.-Karl-Storz-Straße 34, 78532 Tuttlingen/Germany
Postbox 230, 78503 Tuttlingen/Germany
Phone: +49 7461 708-0
Fax: +49 7461 708-105
E-Mail: vet@karlstorz.com

www.karlstorz.com